

# Z-1060 Pocket Size Personal Data Collector

## 1.Z-1060 Pocket Size Personal Data Collector



MODEL NO	ZEBEX STD P/N	REMARK
Z1060-PD	<b>Z10-93132-60</b>	ZEBEX task inside

## 2. ACCESSORIES

### 1.Serial Communication Cable

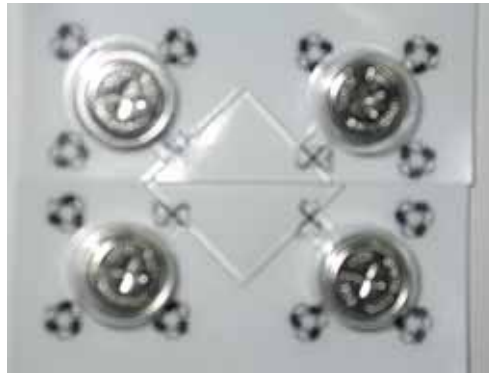


PIN-OUT CONFIGURATION	
DB-9(F)	
2	TxD(Transmit data)
3	RxD(Receive data)
5	GND(Signal Ground)
DC-IN	<b>9V(charge Voltage)</b>
USB port	
1	<b>9V(charge Voltage)</b>
2	TxD(Transmit data)
3	RxD(Receive data)
5	<b>GND</b>

ZEBEX STD P/N	Feature	REMARK
<b>CAB-50375-R9</b>	Serial Communication Cable	RS-232C Level

## **2, BATTERY PACK**

### **BATTERY CELL**



<b>ZEBEX MODEL NO</b>	<b>ZEBEX P/N</b>	<b>REMARK</b>
BT VARTA 1/V40H	<b>CMP-45513-BT</b>	4*VARTA 1/V40H Ni-MH rechargeable battery

## **3. Power adaptor**

### **PSU-20-UR**



### **PSU-20-UE**



<b>MODEL NO</b>	<b>INPUT</b>	<b>OUTPUT</b>	<b>ZEBEX STD P/N</b>	<b>REMARK</b>
PSU-20-UR	90~260 VAC	9 VDC 1A	<b>PWO-52207-UR</b>	For Cradle /BATTERY CHARGE
PSU-20-UE	90~260 VAC	9VDC 1A	<b>PWO-52208-UE</b>	For Cradle /BATTERY CHARGE